

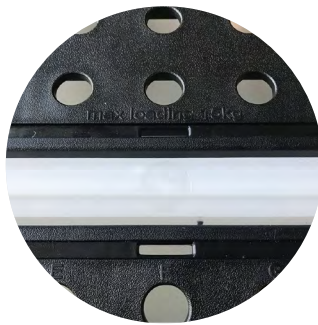
Lab Spill Containment Pallets

SPL001

1. Modeled-in sump catches leaks, drips and spills to keep your storage areas clean and safe and is 100% tested leaktight.
2. Constructed of durable Propenepolymer material to resist UV rays, rust, corrosion and most chemicals.
3. Used as a console to prevent the experimental table from pollution.
4. Regarded as a secondary container to hold corrosive chemicals and placed in a standard safety cabinet for storing and transferring in batch.
5. Set under the experimental console to increase the leakage volume for protecting and easily cleaning.
6. Equipped with holes on decks, making it can be used as a tube rack for fear of glass equipment damaging by misoperation.
7. Modular deck components can be mixed and matched to fit the space.
8. Also be considered as a secondary storage container without grate.
9. Translucent white sidewalls allow easy visual inspection.
10. Comply with EPA 40 CFR 264.175 and NPDES.



Application for 12Gal or more.



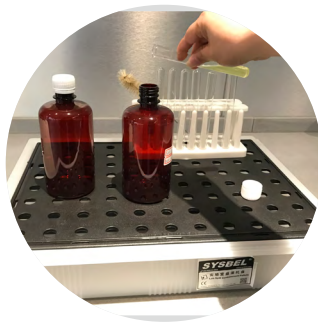
Modular design lets you join together.



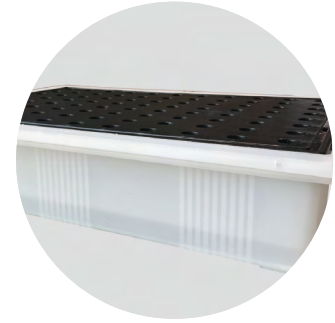
Holes marking with letters & numbers.



Equipped with handle for easily transporting.



Temporarily place the tubes with the diameter of less than 16mm.



Translucent white sidewalls allow easy visual inspection.

Lab Spill Containment Pallets

Material	Product Size (H*W*D/cm)	Packing Size (H*W*D/cm)	Loading Capacity (Kgs.)	SumpeCapacity (L/ Gal)	N. W. (Kgs.)	G. W. (Kgs.)	Model
PP	49x36x10	50x37x11	15	13/3.5	2.2	3.0	SPL001

Application

for safety cabinet (12 Gal and more)